



Cannon River Rendezvous '12

Presented By
Twin City Muzzle Loaders Club, Inc.
May 25-28, 2012

Horn Shoot
Flint & Steel Contest
Cooking Contest
Kid's Games, Candy Cannon
Primitive Archery Walk

Paddle Dance
Shooting Competitions
Hawk & Knife Competitions
Handmade Quilt Raffle
Sat Night Steak & Chicken Dinner

Memorial Day Service
Ice Sales
Water Provided
Firewood Provided

Jam sessions and Old Tyme music by "Owen & The Better Than Nothing Band"

Calling all Buckskinners, Voyageurs, Fur trappers, Longhunters, Flatlanders, kinfolk, and any other critter who has been known to depart from the truth a bit, the Cannon River Rendezvous returns on May 25th thru 28th. And if you are of stout and courageous spirit, you can be a part of it. Bundle your tent poles, shake out your bedroll, and prepare to stake your lodge at the Whitson Family Farm.

Beside much trading and merrymaking, there will be many contests of skill involving rifle, knife, tomahawk, flint & steel, and cooking, to name just a few. Prizes will be awarded to those who have excelled through talent or just plain fool luck!

Plan now to attend the Saturday Night Feast! Menu options are 8 oz. steak or quarter chicken, potatoes, veggies, and dessert, all for a modest fee. **Limited meal tickets** will be sold at check in. Avoid disappointment and **reserve your meal tickets with your mail-in registration.**

Pets are allowed, but must be leashed, sociable, and cleaned up after!

Campsites are available for primitive, modern, short-term, late arriving, and early departing campers. Campsites have been added and major camp improvements (including road and trail upgrading) have been made for 2012. Follow our site improvements on our website.

Gate and setup schedule (subject to change):

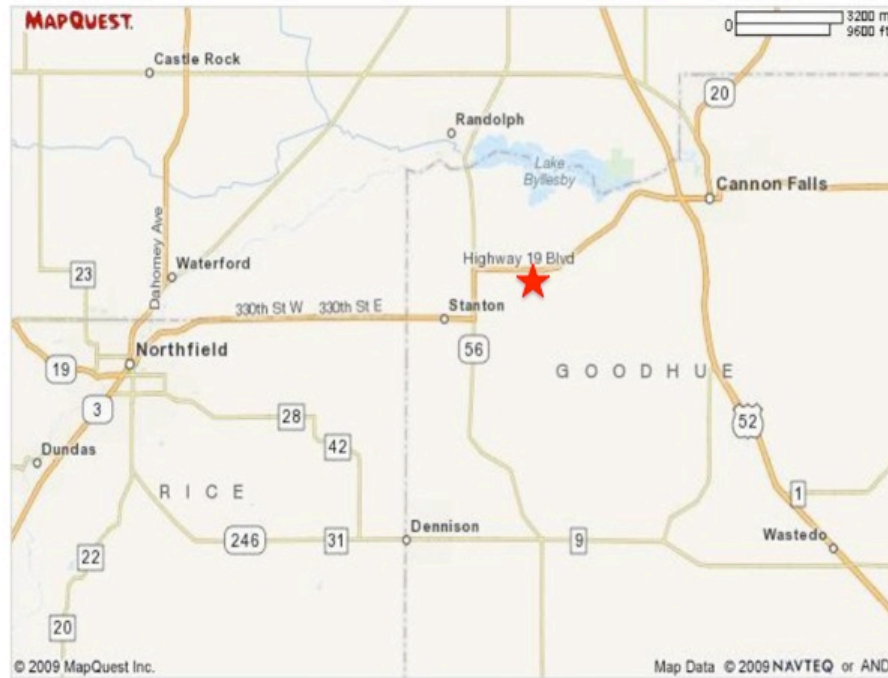
Wednesday and Thursday, 8am-9pm	Early setup for traders and club members only.
Friday, 6-9am and 4-9pm	Setup, all campers. One hour to unload.
Friday, 10am-4pm	Open to public. Period correct in Primitive Camp.
Saturday, 6-9am	Last chance to enter Primitive Camp to setup. One hour to unload.
Sunday, 6-9am	Last chance to enter modern/latecomer camps for setup. Registration closed.
Saturday and Sunday, 10am-4pm	Open to the public.
Monday, 10am-3pm	Open to the public. Memorial Day Service 1pm.
Monday, after 3pm	Tear down allowed. Period correct in primitive camp until 3pm. No exceptions.

No vehicles are allowed in primitive camp between 10am Saturday and 3pm Monday. If you must tear down before 3pm Monday, you may setup in the short-term camp area. **Primitive campers are allowed 1 hour to unload and remove their vehicles. Primitive campers are to be period correct after setup. No vehicles in primitive camp overnight.** Outside of setup hours, campers may cart or pack into the Primitive Camp, or set up in short term or modern camp areas. Go to www.tcmlc.com for traders' and blanket trading guidelines.

For more information, go to www.tcmlc.com or contact: Boosway Jim Strupp at tcmlc@bigfoot.com or 612.721.8039.

Information on this flyer is accurate to the best of our knowledge and ability at the time of printing, but is subject to change without notice. Go to www.tcmlc.com for additional details and last minute information.

Whitson Family Farm 2153 Highway 19 Blvd, Stanton, Mn 55018



Directions (watch for teepee signs near site):

From Twin Cities: 494 to Hwy. 52/55 (Inver Grove Heights). South on 52 to Hwy 19 in Cannon Falls. Right (west) on Hwy 19 approx 5mi to the Whitson Farm on the right.

From Rochester: North on 52 to Hwy 19 exit in Cannon Falls. Left (west) on Hwy 19 approx 5mi to Whitson Farm on the right.

From Cannon Falls: Hwy 19 west approx 5mi to Whitson Farm on the right.

From Northfield: Hwy 19 east to Hwy 19/56 (Stanton). Left (north) on Hwy 19/56 to the Hwy 19 split. Right (east) on Hwy 19 1/4 mile to Whitson Farm on the left.



The Better Than Nothing Band practicing



Creekin' on a warm afternoon

*****Complete and mail with check. Or send information on a separate sheet of paper with check.*****

Name (print clearly please) _____

Address, city, state, zip _____

Phone _____ E-Mail _____

First lodge, 2 adults, children under 18	\$ 30.00	Camp choice (X)
Additional adults 18 and older (\$5 each)	+\$ _____	Primitive _____
Additional lodge in registered camp, \$10 each	+\$ _____	Modern _____
Trader's fee \$20 additional	+\$ _____	Short term (teardown before 3pm Mon) _____
Steak dinner (\$7.50 ea) _____ Chicken (\$6.50 ea) _____	+\$ _____	Late setup (after 8am Sat) _____
Late registration fee, after May 1 st , \$5.00	+\$ _____	
Total Enclosed	\$ _____	

Do you wish a call from the Segundo regarding handicapped or other special arrangements? Yes / No
Would you be willing to volunteer your services during the Rendezvous? Yes / No

Camp prize drawing for registered camps only.
Pre-registrations must be postmarked by May 1, 2012 to avoid late fee.

Make check payable to: Twin City Muzzle Loaders Club
Mail completed form and check to: Don Bushek, 4615 Shenandoah Lane N, Minneapolis, MN 55446 [website]